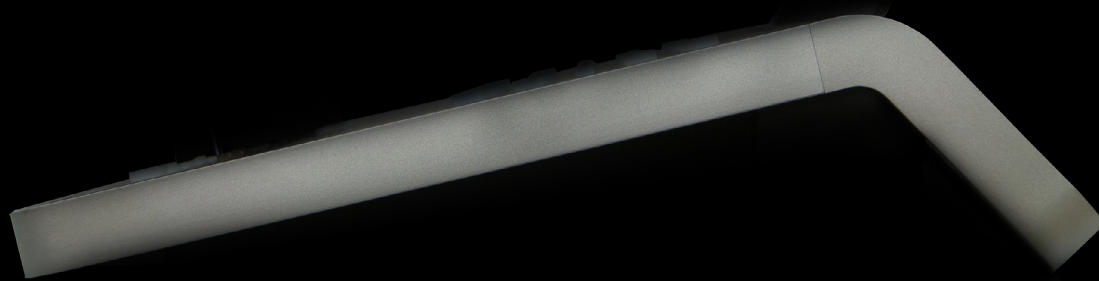
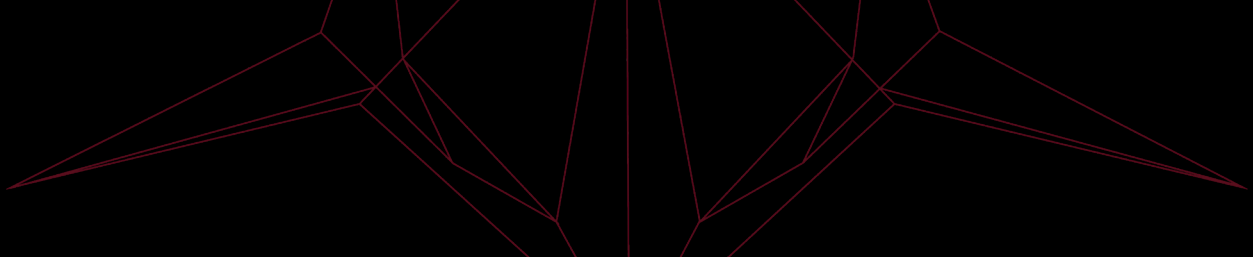


light Shark series.



LS .WING





Executors Buttons

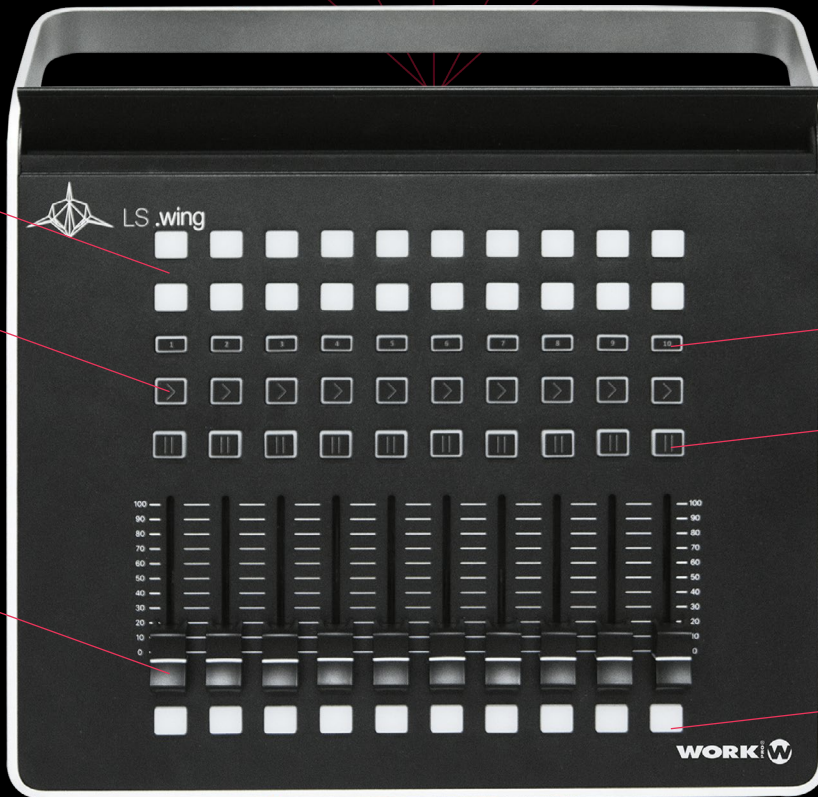
Playback Control

Faders

Selection Buttons

Playback Control

Flash Buttons



USB Data Ports

powerCON TRUE1

+ 5V Power USB

Lamp Port

Universe A

Universe B

Gigalan Switches



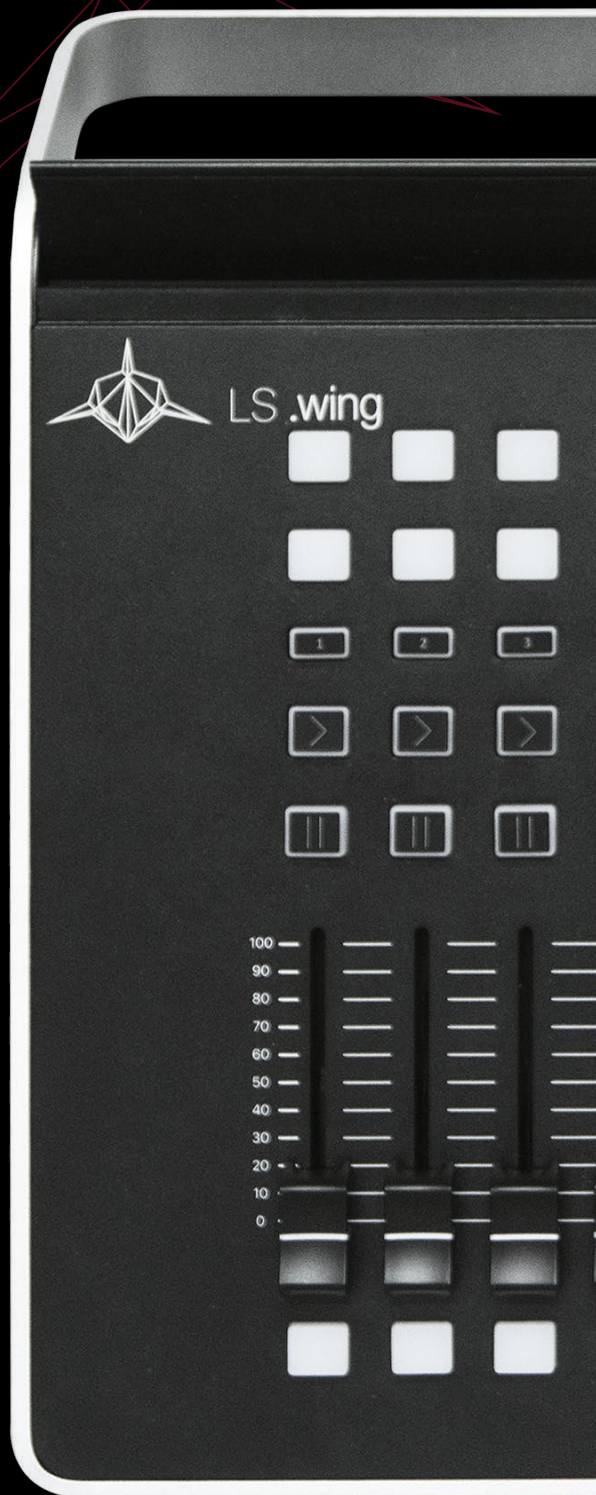
# LS .wing

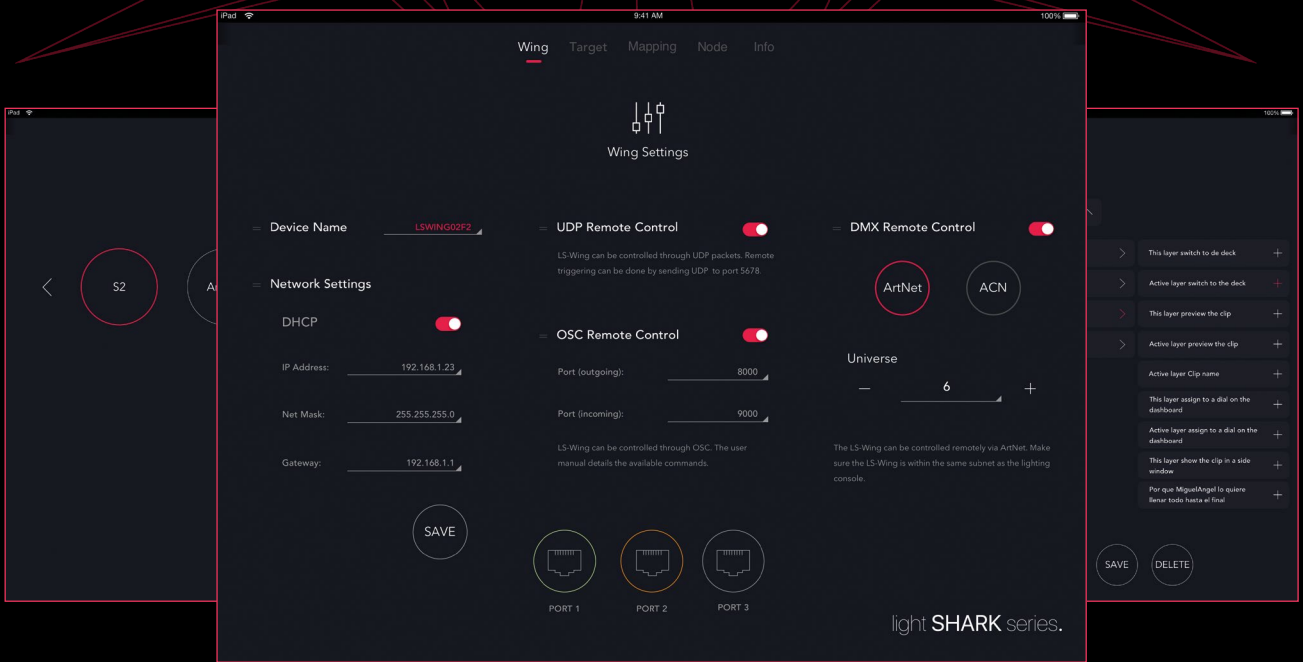
**LS .wing** is an innovative hardware which offers several products in one: a Wing for **LS .1 / LS .Core**, an OSC/UDP hardware controller, a MIDI controller and a user programmable remote controller.

**LS .wing** can send/receive OSC commands through ethernet from any software or hardware compatible with this protocol. In addition, it can send/receive UDP messages, making it compatible with any AV device or software on the market.

**LS .wing** offers outstanding versatility to the lighting control market, as it can be configured to be compatible with other lighting systems. Developed as a 4 in 1 product, **LS .wing** can be a straightforward fader wing, an OSC hardware controller or a standalone MIDI console for any device that accepts MIDI control via USB. A total of four USB ports are provided, including a USB-B port, making it easy to connect to MIDI devices and charge smartphones and tablets.

In all four modes, **LS .wing** has a built-in ArtNet/sACN to DMX converter node offering two Direct DMX universes. **WORK PRO's** existing **LightShark** products - the **LS .1** and **LS .Core** - already offer two Direct DMX universes via an XLR connector, so by adding **LS .wing** it is very easy to double the number of Direct DMX universes available to each console. Its 4 in 1 design makes it easily the most versatile and functional controller on the market. In addition, lighting professionals working in theatres and on live shows can have complete control of more than one device at a time just by using different pages in the same unit.





**LS .wing** is an ultraversatile multiprotocol control surface. With this multifunctional device can be controlled almost everything and also can be triggered or remote controlled from external devices. **LS .wing** can be set up as:

### 1- Lightshark Fader Wing.

When connected to a Lightshark lighting controller, **LS .wing** is set up as a fader wing offering: 10 playback faders, 20 executor buttons, 10 flash buttons. 3 more universes, Gigabit ethernet switch

### 2- OSC & UDP Programmable controller.

**LS .wing** is the first controller in the market that offers a midi console, a fader wing and a programmable OSC & UDP control surface, where each fader or button can be set up to send one command or multiple commands to one or multiple OSC and/or UDP clients making possible to control almost every ethernet controllable device such as, Lighting controllers, Media servers, multiprotocol controllers.

### 3- MIDI Console.

Meanwhile many MIDI controllers are made to control blocks of 8 faders, **LS .wing** offers 10 faders and the rest of buttons configuration to control MIDI devices, being very suitable when connected to MIDI controllable lighting consoles. No matter which brand.

### 4- Remote controller.

In addition **LS .wing** also offers the possibility to be triggered by remote devices making able to send one or multiple commands at the same time triggered remotely by an external device.



Designed to reflect the look and aesthetics of **WORK PRO's** existing **LS .1** hardware controller, **LS .wing** also incorporates a device holder that can accommodate up to a 13" tablet. For safety's sake, two fixing points are incorporated so that smart devices can be tethered to the console via Kensington locks.

**LS .wing's** surface control comprises 20 executor buttons and 10 playbacks with their respective selection, flash and execution of scenes. Alongside its surfeit of USB ports, **LS .wing** also has three ethernet Gigabit switch ports, a True1 (110/220V) mains connector and an XLR connector for a 5V **LLG-1** LED lamp.



Av. del Saler, nº 14 · Pol. Ind. L'Alteró · Silla 46460 · Valencia · Spain · Phone: +34 96 121 63 01  
equipson@equipson.es / [www.lightshark.es](http://www.lightshark.es)

Due to a policy of ensuring constant improvement, Equipson S.A. reserves the right to change the specification in materials or designs of any product supplied without notice.