



WORK
PRO

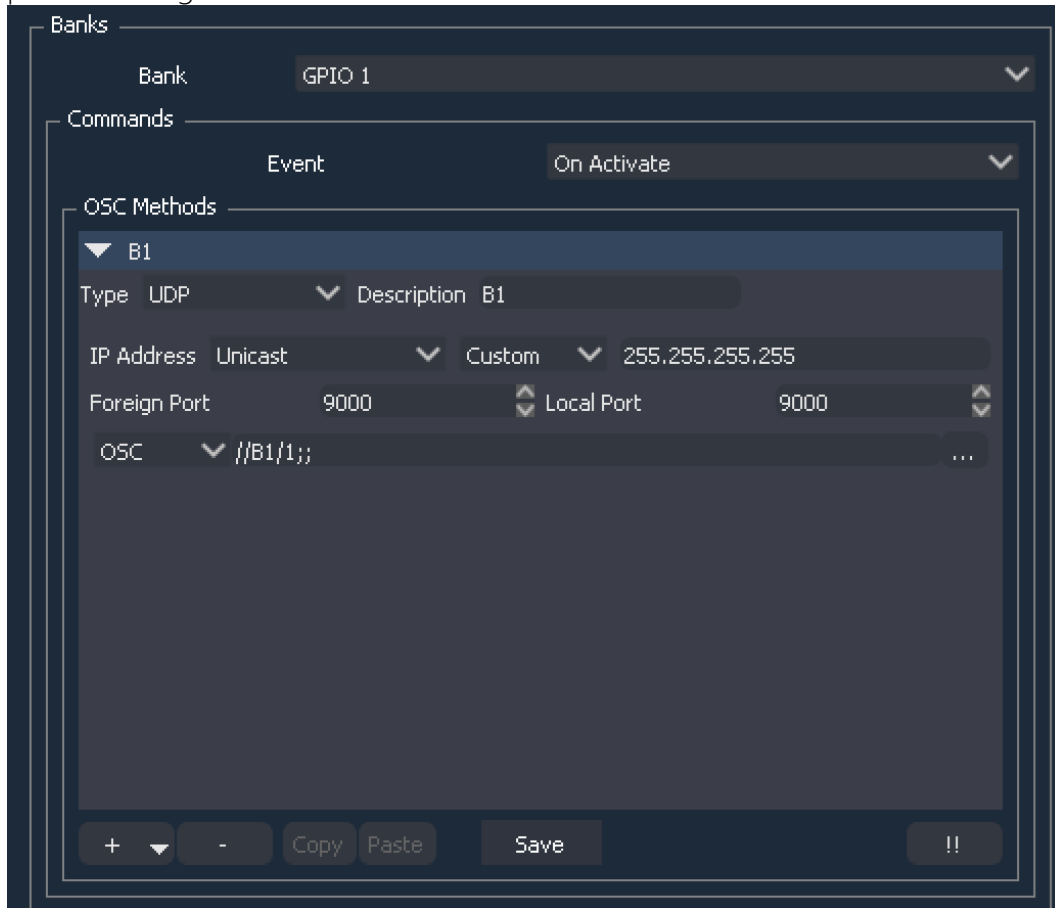
Sending Legacy OSC in WorkCad 3.5.13

v.1.0



Sending Legacy OSC in WorkCad 3.5.13

You may have noticed that in recent versions of WorkCad, the OSC option has disappeared from the message type drop-down menu, which allowed us to send messages in the correct format to third parties through devices such as LM-GPIO or LM-Serial.



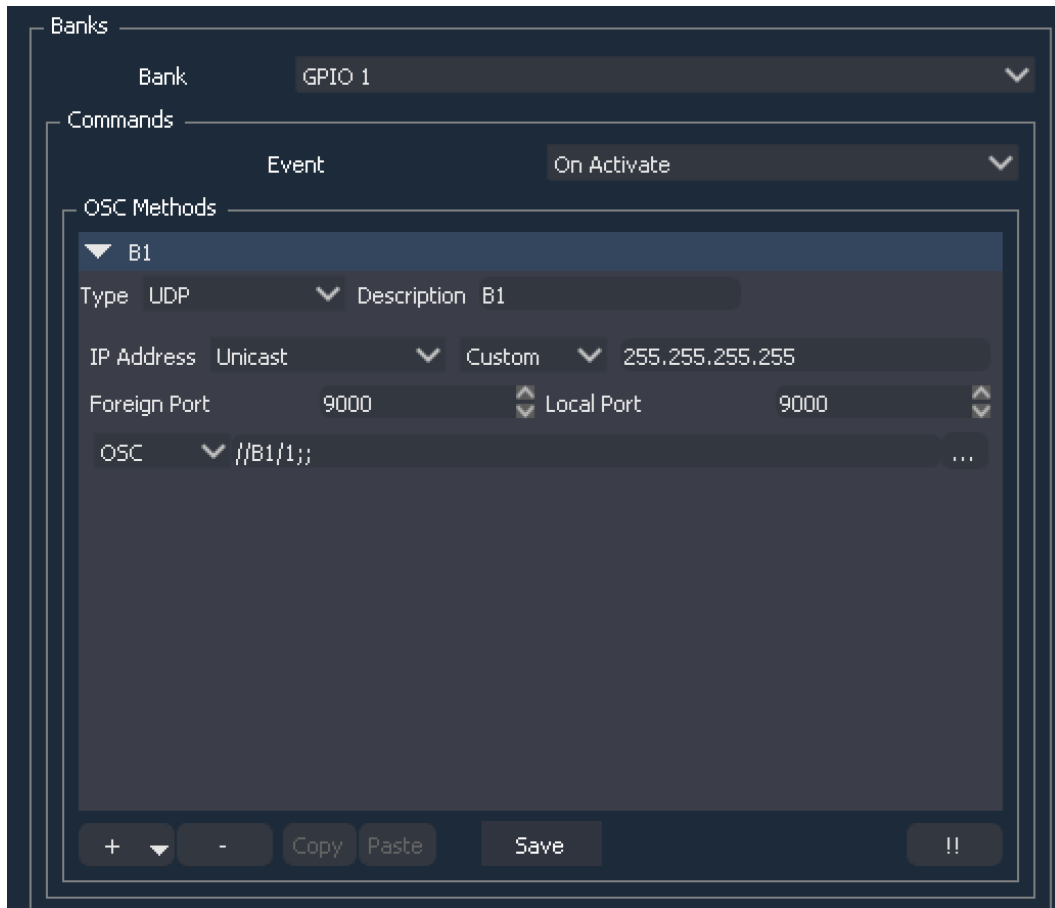
In the latest versions we have the Custom option; to send messages without formatting, in this case, what is written is all the information without any type of header or format, the Message option is the one dedicated to the pre-set messages for the BlueLine series.

For the messages to be sent and understood as CSO we will have to complete the formatting using the Custom option as we can see in this nice example for Resolume.

	HEXADECIMAL			ASCII
	Met.	Clmn.	Protocolo	
Connect Column 1	2f636fd706f736974696f6e2f636f6c756d6e732f	31	2f636fe6e6563740002c6900000000001	/composition/columns/1/connect\$00\$00,i\$00\$00\$00\$00\$00\$01
Connect Column 2	2f636fd706f736974696f6e2f636f6c756d6e732f	32	2f636fe6e6563740002c6900000000001	/composition/columns/2/connect\$00\$00,i\$00\$00\$00\$00\$00\$01
Connect Column 3	2f636fd706f736974696f6e2f636f6c756d6e732f	33	2f636fe6e6563740002c6900000000001	/composition/columns/3/connect\$00\$00,i\$00\$00\$00\$00\$00\$01
Connect Column 4	2f636fd706f736974696f6e2f636f6c756d6e732f	34	2f636fe6e6563740002c6900000000001	/composition/columns/4/connect\$00\$00,i\$00\$00\$00\$00\$00\$01
Connect Column 5	2f636fd706f736974696f6e2f636f6c756d6e732f	35	2f636fe6e6563740002c6900000000001	/composition/columns/5/connect\$00\$00,i\$00\$00\$00\$00\$00\$01
Connect Column 6	2f636fd706f736974696f6e2f636f6c756d6e732f	36	2f636fe6e6563740002c6900000000001	/composition/columns/6/connect\$00\$00,i\$00\$00\$00\$00\$00\$01

Sending Legacy OSC in Workcad 3.5.13

Tal vez se haya percatado que en las recientes versiones de WorkCad ha desaparecido en el menú desplegable de tipo de mensaje la opción OSC, esta tipología nos permitía mandar mensajes en correcto formato a terceros a través de dispositivos como LM-GPIO o LM-Serial.



En las últimas versiones tenemos las opciones Custom; para enviar mensajes sin formato, es decir, lo que se escribe es toda la información sin ningún tipo de cabecera o formato, la opción Message es la dedicada a los mensajes preestablecidos para la serie BlueLine.

Para que los mensajes sean enviados y entendidos como OSC deberemos completar el formato usando la opción Custom como podemos ver en este lindo ejemplo para Resolume.

	HEXADECIMAL			ASCII
	Met.	Clmn.	Protocolo	
Connect Column 1	2f636fd706f736974696f6e2f636f6c756d6e732f	31	2f636fe6e65637400002c69000000000001	/composition/columns/1/connect\$00\$00,\$00\$00\$00\$00\$00\$01
Connect Column 2	2f636fd706f736974696f6e2f636f6c756d6e732f	32	2f636fe6e65637400002c69000000000001	/composition/columns/2/connect\$00\$00,\$00\$00\$00\$00\$00\$01
Connect Column 3	2f636fd706f736974696f6e2f636f6c756d6e732f	33	2f636fe6e65637400002c69000000000001	/composition/columns/3/connect\$00\$00,\$00\$00\$00\$00\$00\$01
Connect Column 4	2f636fd706f736974696f6e2f636f6c756d6e732f	34	2f636fe6e65637400002c69000000000001	/composition/columns/4/connect\$00\$00,\$00\$00\$00\$00\$00\$01
Connect Column 5	2f636fd706f736974696f6e2f636f6c756d6e732f	35	2f636fe6e65637400002c69000000000001	/composition/columns/5/connect\$00\$00,\$00\$00\$00\$00\$00\$01
Connect Column 6	2f636fd706f736974696f6e2f636f6c756d6e732f	36	2f636fe6e65637400002c69000000000001	/composition/columns/6/connect\$00\$00,\$00\$00\$00\$00\$00\$01



EQUIPSON, S.A.

Avda. El Saler, 14 Pol. Ind. L'Alteró

46460- SILLA

Valencia – Spain

www.equipson.es support@equipson.es