



WORK
PRO

API for 3rd party

v.1.0

 **Synthea**

by  **WORK**
PRO

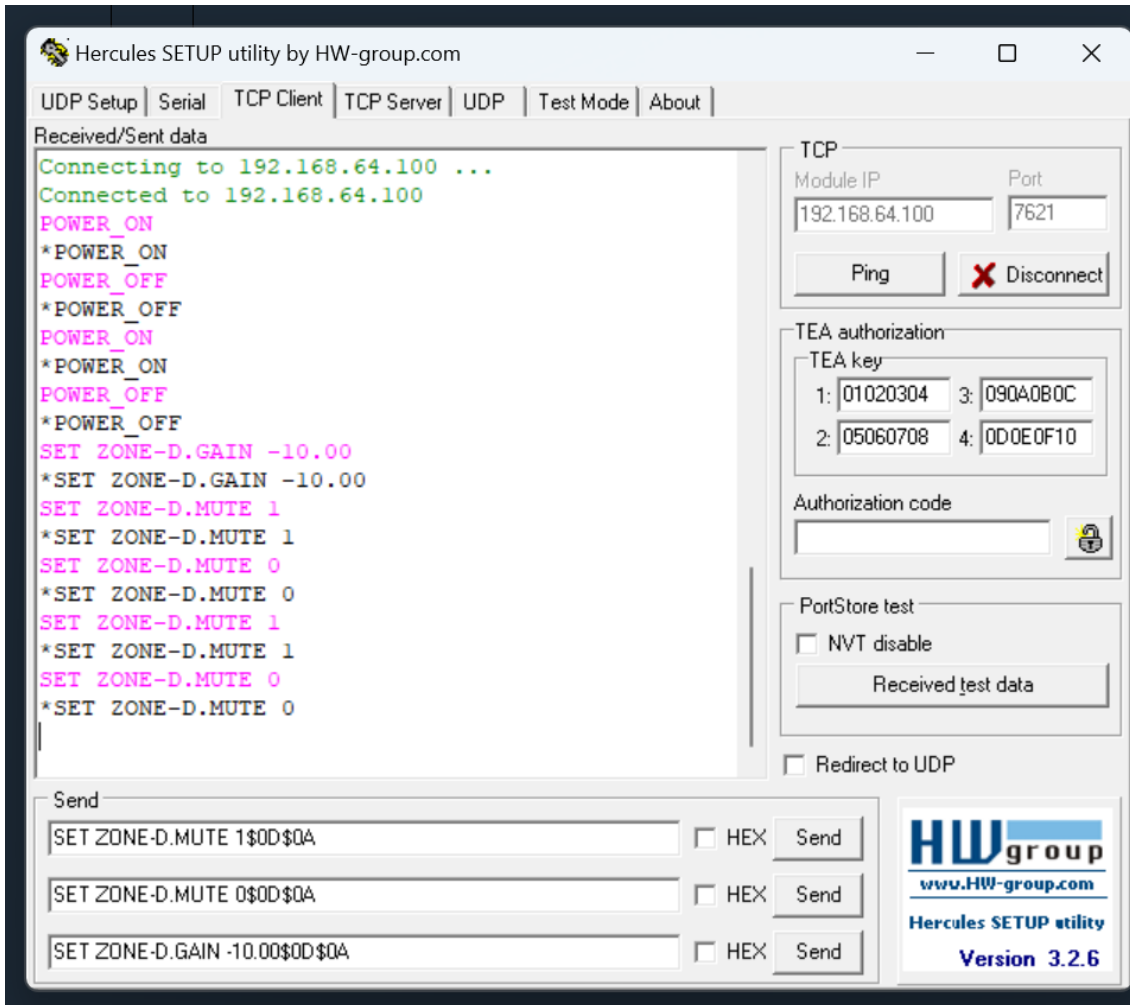
API

Assign IP: Stages leave the factory with the IP 192.168.64.100

Port: 7621

STRING TO SEND	DESCRIPTION	VARIABLE VALUES
POWER ON	NORMAL MODE	NONE
POWER OFF	STANDBY MODE	NONE
SET ZONE-X.MUTE Y\r\n	IF Y=1 MUTES ZONE X. IF Y=0 UNMUTES ZONE X	X[A,B,C,D] , Y[0,1]
SET ZONE-X.GAIN Y\r\n	SET ZONE X TO VOLUME=Y. Y CAN BE FROM MIN TO MAX	X[A,B,C,D] , Y[INT(MIN) to INT(MAX)]
SET OUT-X.GAIN Y\r\n	SET OUTPUT X TO VOLUME=Y	X[1,2,3,4] , Y[-30dB to 15dB]
SET OUT-X.MUTE Y\r\n	IF Y=1 MUTES OUTPUT X. IF Y=0 UNMUTES OUTPUT X	X[1,2,3,4] , Y[0,1]
SET OUT-X. SRC Y"	LINK OUT X TO ZONE Y	X[1,2,3,4] , Y[A,B,C,D]

EXAMPLE WITH HERCULES UTILITY



IN THIS PICTURE WE SEE:

SELECTED TCP CLIENT

DESTINATION IP (POWER AMPLIFIER): 192.168.64.100

DESTINATION PORT:7621

ALL STRINGS ARE FINISHED WITH \$0d\$0A THAT IS THE HEXADECIMAL REPRESENTATION OF \r\n.

FIRST COMMAND: SET ZONE D TO MUTE

SECOND COMMAND: SET ZONE D TO UNMUTE

THIRD COMMAND: SET ZONE D GAIN TO -10 dB



EQUIPSON, S.A.

Avda. El Saler, 14 Pol. Ind. L'Alteró

46460- SILLA

Valencia – Spain

www.equipson.es support@equipson.es