

# ARION 21 A

WITNESS THE EVOLUTION



**WORK** PRO 

# ARION 21 A

ARION 21 A comprises the SL 210 A and the SL 218 SA subwoofer. Designed entirely at the WORK PRO headquarters in Valencia, Spain, both line array elements form a system suited to use in demanding environments that require power, high-quality audio reproduction and controlled directivity.

The SL 210 A is a two-way, biamplified line array element with remote monitoring and control via Ethernet, a built-in DSP section, and two Class D amplifiers with 1000W peak for the Low frequencies and 500W peak for the Highs (both featuring a built-in universal power supply for seamless use internationally). The low frequencies are handled by two 10-inch LF drivers and a bass reflex enclosure, while a 1.4-inch compression driver, with a polymer diaphragm, takes care of the high frequencies. The compression driver feeds the newly developed VI-10 waveguide which perfectly integrates the high frequencies from multiple SL 210 A units, creating a seamless HF response from the complete array. Through careful application of the onboard DSP, tailored passive filtering of one of the LF drivers in the low/mid range and a newly designed dispersion horn, the SL 210 A achieves consistent 120-degree horizontal coverage, with a rock-solid frequency response irrespective of listening position, and is capable of delivering an impressive maximum sound pressure level of 135dB. The frequency response extends from 18kHz down to 100Hz (-10dB).

## SL 210 A - FEATURES

- Self-powered two-way system.
- Remote monitoring via Ethernet.
- Compression driver with PM4 polymer membrane.
- 120° horizontal uniform coverage.
- Factory presets by number of units.
- Delay and up to 8 configurable parametric EQs.
- 1000W peak amplifier for Lows and 500W peak amplifier for Highs.
- Universal switched power supply.
- Independent RMS and peak limiters per way.
- SL 210 A and SL 218 SA are factory adjusted in phase.
- 27kg of weight.

## SL 210 A - SPECIFICATIONS

### ACOUSTIC SPECIFICATIONS

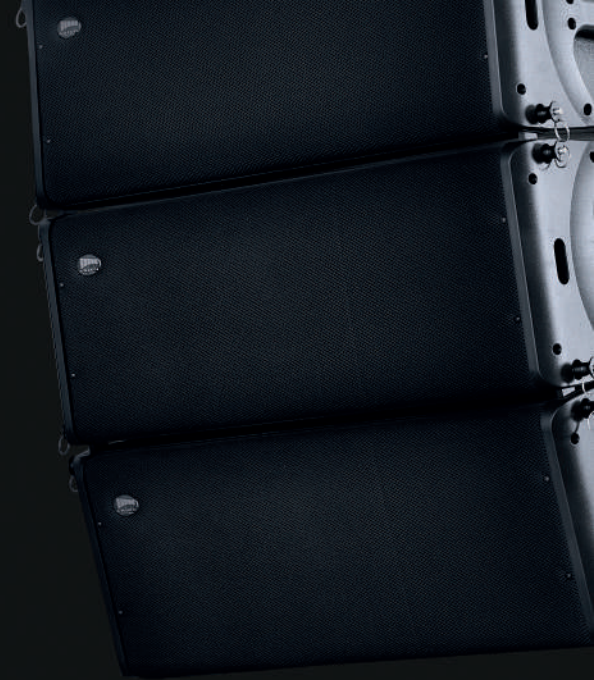
Frequency Range .....	100Hz – 18kHz (-10dB)
Max. Peak SPL .....	135 dB
Horizontal coverage .....	120°
Transducers .....	LF, 2 x 10", 1.46" voicecoil
.....	HF, 1.4" output, 1.75" voicecoil
.....	PM-4 Membrane

### AMPLIFIER

Protections .....	Thermal and Overload
Limiters .....	RMS and Peak
LF Power .....	1000Wpeak
HF Power .....	500Wpeak
Type .....	Class D
Cooling .....	Passive dissipation
Universal power supply .....	85Vac a 265Vac, 45Hz a 65Hz
Shut-down Voltage .....	85Vac
DSP Control .....	Ethernet

### OTHER FEATURES

Dimensions .....	283 x 769 x 475 mm
Material .....	Birch plywood
Colour .....	Black





Lower frequencies are faithfully reproduced by the new dedicated SL 218 SA subwoofer, which is powered by a 4000W peak Class D amplifier, and can handle frequencies from 30Hz up to either 120Hz or 140Hz, depending on the preset.

The powerful DSP built into the SL 210 A provides the EQ, level and phase adjustments required to produce a faithful, accurate sound, no matter how many SL 210 A elements are being used in the overall array (as with any line array, vertical coverage is dependent on the number of elements being used in the system and the splay between them).

Perfect for audio installations, theatres and concert halls, the SL 210 A/SL 218 SA system is a high-performance sound reinforcement solution offering superb intelligibility and clarity of sound.

## SL 218 SA - FEATURES

- Self-powered system.
- Remote monitoring via Ethernet.
- Factory presets with two cut-off frequencies, boost and cardioid settings.
- Delay and up to 8 configurable parametric EQs.
- 4000W peak amplifier.
- Universal switched power supply.
- RMS and peak limiters.
- 96 kg of weight.

## SL 218 SA - SPECIFICATIONS

### ACOUSTIC SPECIFICATIONS

Frequency Range .....	30Hz - 120Hz/140Hz (-10dB)
Max. Peak SPL .....	138 dB
Transducers .....	2 x 18", 4" voicecoil

### AMPLIFIER

Protections .....	Thermal and Overload
Limiters .....	RMS and Peak
Power .....	4000W peak
Type .....	Class D
Heat Dissipation .....	Cooling fan
Universal Power Supply .....	85Vac a 265Vac, 45Hz a 65Hz
Shut-down Voltage .....	85Vac
DSP Control .....	Ethernet

### AUDIO INPUTS/OUTPUTS

Input Connector.....	Female XLR
Output Connector .....	Male XLR
Input Sensitivity.....	+ 4 dBu

### OTHER FEATURES

Dimensions .....	579 x 1165 x 651 mm
Material .....	Birch plywood
Colour .....	Black



# SOFTWARE

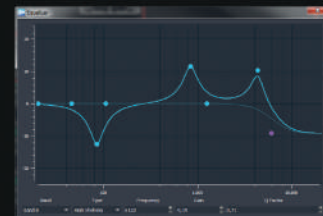
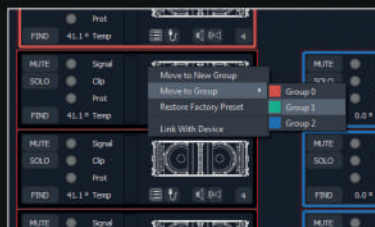
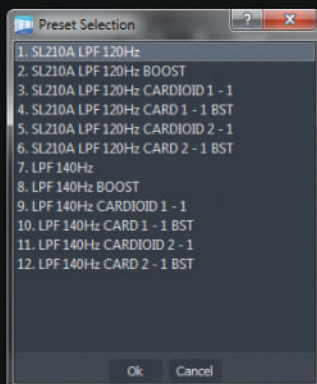
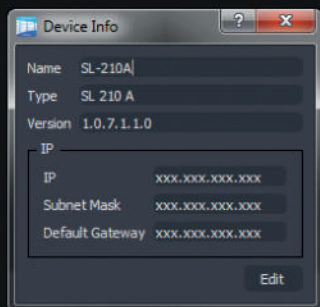
By connecting a computer to an Arion 21 A based system via Ethernet, users can control the array remotely via the Speaker Manager software, monitor the array operating temperature in real time, select factory presets for the correct number of SL 210 A elements in their array, choose the preset for the subwoofer, and apply delay and up to eight parametric room correction EQs as required. The SL 210 A and SL 218 SA units are in-phase when the SL 210 A units are mounted directly above the subs; if the units have to be mounted differently in the venue, it's easy to calculate and dial up the right amount of delay from the DSP to cancel out the effects of any horizontal separation introduced between the SL 210 A and subs and bring the overall output back into phase. The built-in DSP also provides driver protection, with independent RMS/peak limiters for each way (bass, mid and high). Naturally, all of these DSP functions can also be controlled directly on each SL 210 A unit via its rear-panel keypad and display. Despite all of this heavy-hitting technology on board, the SL 210 A weighs in at a lightweight 27kg per element.



SL 210 A rear panel.



SL 218 SA rear panel.





# ACCESSORIES

A wide range of accessories is available for the new Arion 21 line array system, including protective covers, rain cover for SL 210 A, transportation dollies and a rigging frame.



**MFF 210**

Rigging frame.



**CRL 210**

Transportation dolly for SL 210 A.



**CRL 218**

Transportation dolly for SL 218 SA.



**SL 210 A COVER**

Protective foam-filled cover for 6 units of SL 210 A.



**SL 218 SA COVER**

Protective foam-filled cover for 2 units of SL 218 SA.



**SL 210 A RAIN COVER**

Rain cover for SL 210 A. (Included).

**WORK**<sup>PRO</sup> **W**

