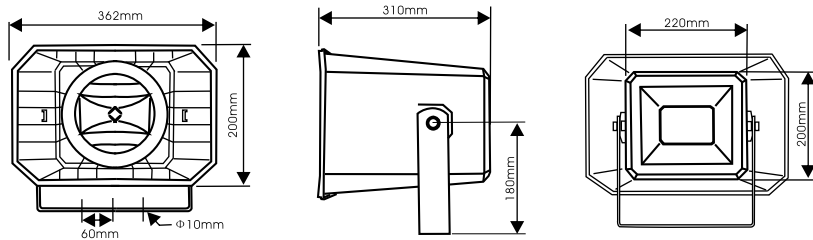


Model: **MSH - 30/BT**
HORN SPEAKER



Dimensions



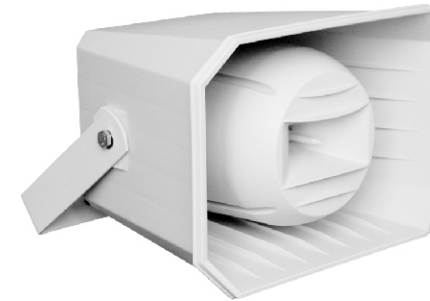
| MSH-30/BT HORN SPEAKER | |
|----------------------------|---------------------------|
| Red (1): Yellow (2) 50W | Yellow (2): Green (3) 25W |
| Green (3): White (4) 12.5W | Red (1): Green (3) 9W |
| Yellow (2): White (4) 4.5W | Red (1): White (4) 3.5W |
| Red (1): Black (5) 8 Ohm | |

WORK PRO W
 www.work.es CE

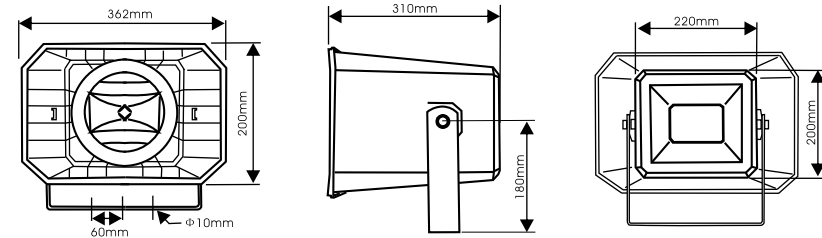
Rated Power 50W
Line Voltage 100 V
Sensitivity (1M/1W) 99 dB
Frequency Response 90 - 20kHz
Dimensions 363 x 253 x 310 mm
Material ABS
Weight 3.9 Kg

Specifications are subjects to be change without notice

Modelo: **MSH - 30/BT**
MOTOR CON DIFUSOR



Dimensiones



| MSH-30/BT HORN SPEAKER | |
|----------------------------|---------------------------|
| Red (1): Yellow (2) 50W | Yellow (2): Green (3) 25W |
| Green (3): White (4) 12.5W | Red (1): Green (3) 9W |
| Yellow (2): White (4) 4.5W | Red (1): White (4) 3.5W |
| Red (1): Black (5) 8 Ohm | |

WORK PRO W
 www.work.es CE

Potencia de Salida 50W
Tensión de línea 100V
Sensibilidad (1M/1W) 99 dB
Respuesta de frecuencia 90 - 20kHz
Dimensiones 363 x 253 x 310 mm
Material ABS
Peso 3.9 Kg

Las especificaciones están sujetas a cambio sin previo aviso